

IMPORTANT SAFETY AND INSTALLATION INSTRUCTIONS

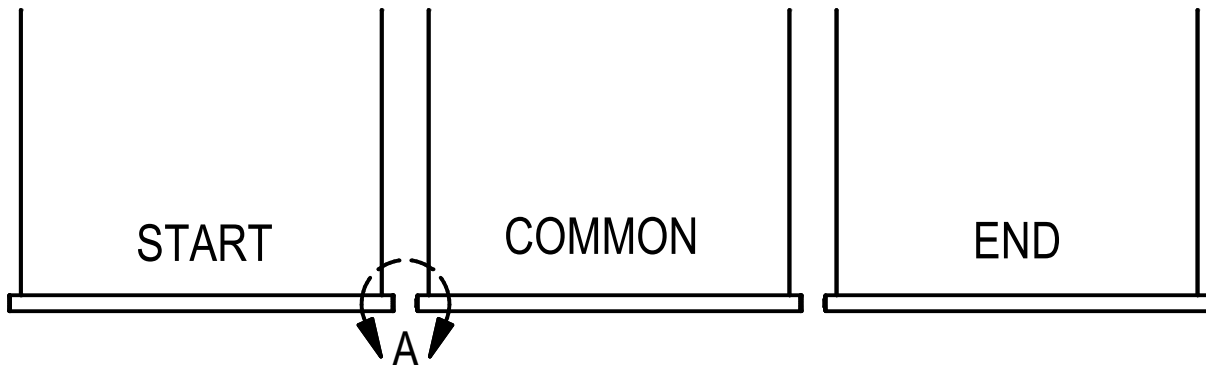
WARNING: Risk of fire and electrical shock. This product is to be installed by a qualified electrician only.

CAUTION: When using electrical equipment, basic safety precautions should always be followed including the following: Read all instructions carefully before installation and save

for future use. Make sure installation and all connections are in accordance with National Electrical Code and any local regulations. To avoid possible electrical shock, be sure that power supply is turned off before installing or servicing this fixture. Servicing should be performed by qualified service personnel.

These instructions do not claim to cover all details or variations. When additional information is desired, please contact your SPI representative.

PAVO 2" CONTINUOUS RUN BUTTONS (BCE)

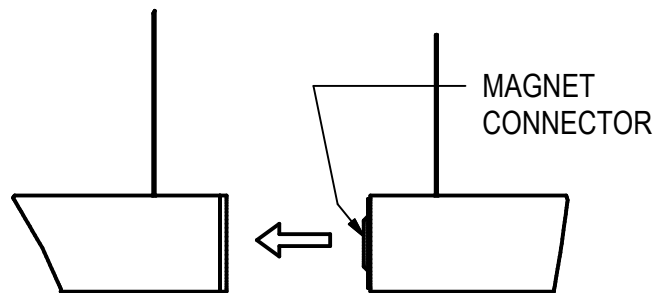


CEILING MOUNTING LOCATIONS:

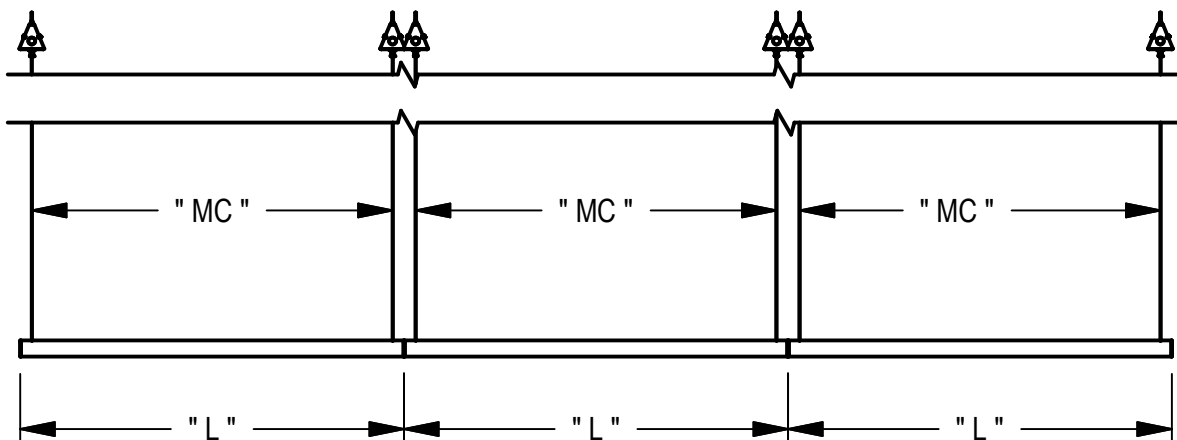
Locate J-boxes or mounting holes in desired location by measuring actual fixture or using the fixture specification sheet. (If mounting fixture at an angle, locate first mounting and use fixture to locate second after hanging one side.)

INSTALLATION:

1. Hang START unit per supplied mounting installation instructions. Align fixture to desired angle.
2. Hang COMMON unit adjacent to START fixture. Insert MAGNET CONNECTOR into end of START fixture. Align fixture(s).
3. Repeat Step #2 for remaining sections and align fixtures when done.



DETAIL A
SCALE 1 / 4



1/15/24
IS105208X

IMPORTANT SAFETY AND INSTALLATION INSTRUCTIONS

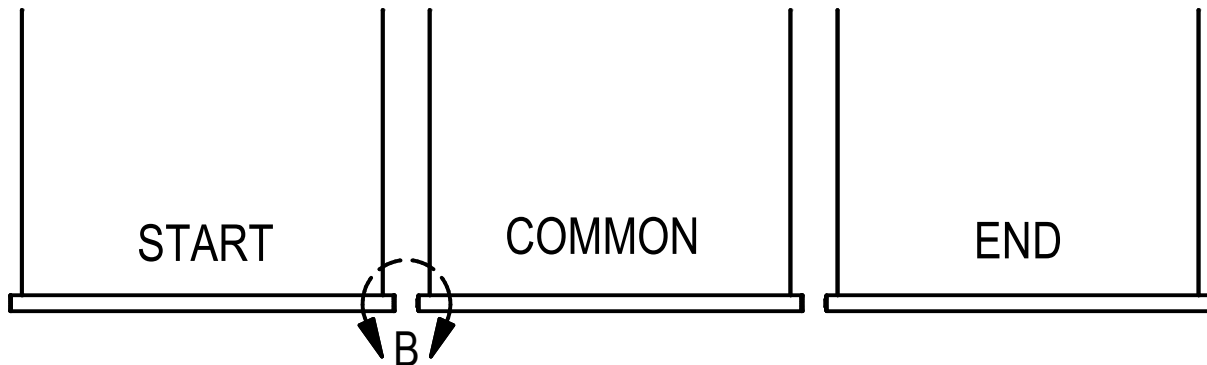
WARNING: Risk of fire and electrical shock. This product is to be installed by a qualified electrician only.

CAUTION: When using electrical equipment, basic safety precautions should always be followed including the following: Read all instructions carefully before installation and save

for future use. Make sure installation and all connections are in accordance with National Electrical Code and any local regulations. To avoid possible electrical shock, be sure that power supply is turned off before installing or servicing this fixture. Servicing should be performed by qualified service personnel.

These instructions do not claim to cover all details or variations. When additional information is desired, please contact your SPI representative.

PAVO 2" CONTINUOUS RUN CANOPY (CEC)

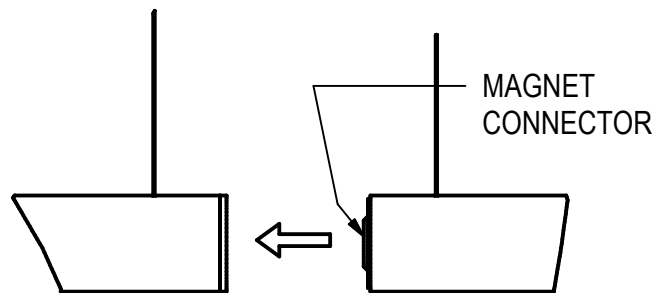


CEILING MOUNTING LOCATIONS:

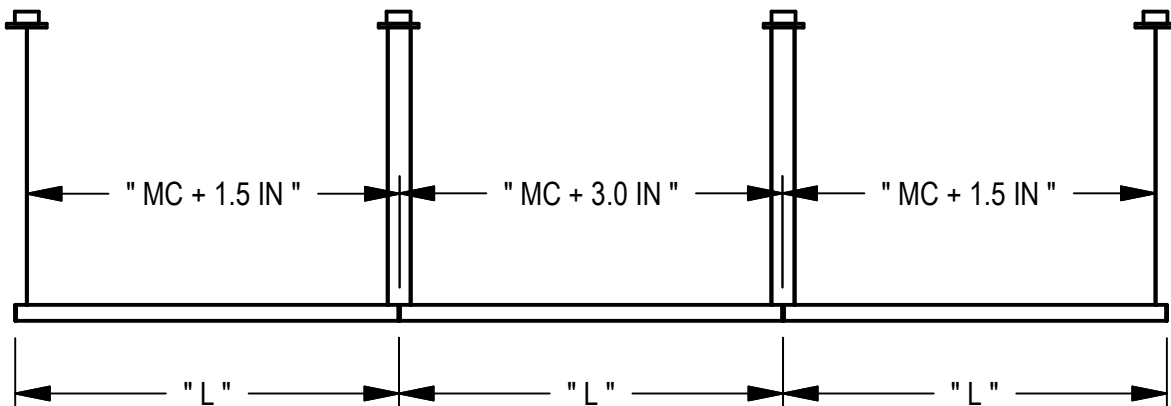
Locate J-boxes or mounting holes in desired location by measuring actual fixture or using the fixture specification sheet . (If mounting fixture at an angle, locate first mounting and use fixture to locate second after hanging one side.)

INSTALLATION:

1. Hang START unit per supplied mounting installation instructions. Align fixture to desired angle.
2. Hang COMMON unit adjacent to START fixture. Insert MAGNET CONNECTOR into end of START fixture. Align fixture(s).
3. Repeat Step #2 for remaining sections and align fixtures when done.



DETAIL B
SCALE 1 / 4



1/15/24
IS105208X